

**KEY**

— **PROPOSED NO WAITING AT ANY TIME**

— **EXISTING WAITING AND PARKING RESTRICTIONS**

Notes

Rev.	Description	Drwn	Sig.	Date	Chkd	Sig.	Date	Appr	Sig.	Date
A	RESTRICTIONS REVOKED AND ADDED	CAH	CAH	02.10	JP	JP	02.10	TPC	TPC	02.1

Drwn	Sig.	Date	Chkd	Sig.	Date	Appr	Sig.	Date
CAH	CAH	02.10	JP	JP	02.10	TPC	TPC	02.1

North Point

Based upon the Ordnance Survey mapping with the permission of the Controller of Her Majesty's Stationary Office. Crown copyright. Unauthorised reproduction infringes Crown copyright and may lead to prosecution or civil proceedings. Surrey County Council LA 076872 1995.

Drawn by	CAH	Sig.	CAH	Date	02.10
Checked by	JP	Sig.	JP	Date	02.10
Approved by	TPC	Sig.	TPC	Date	02.10

Project

**REIGATE AND BANSTEAD DPE BANSTEAD**

**IMPLEMENTED TRAFFIC ORDERS**

SHEET OF

**SURREY COUNTY COUNCIL**  
Sustainable Development

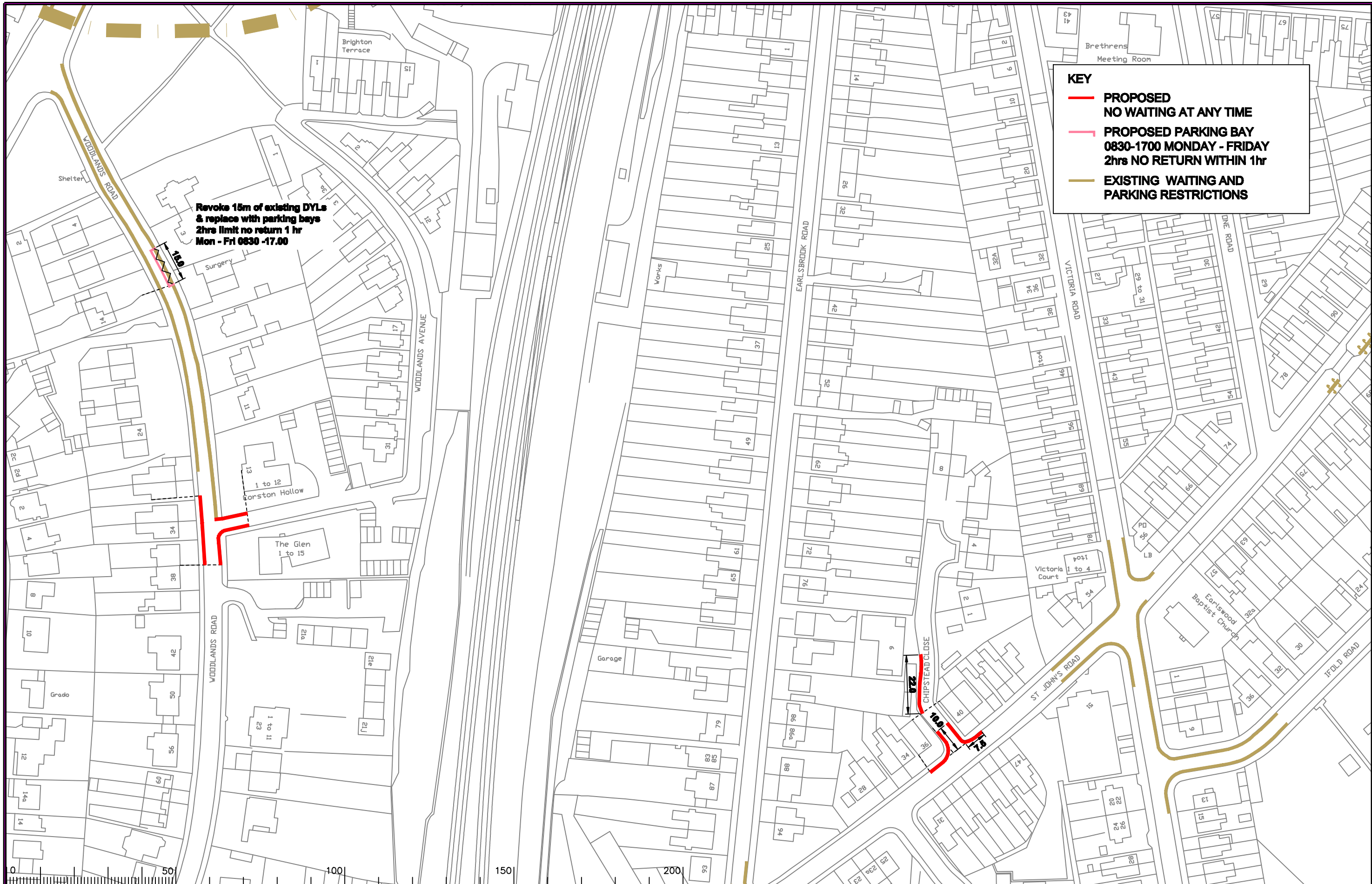
Project No. 3282/R&B

Contract Sheet No. 18003

Drawing No. 18003

Rev. A

Classification PRESENTATION



**KEY**

- **PROPOSED NO WAITING AT ANY TIME**
- **PROPOSED PARKING BAY 0830-1700 MONDAY - FRIDAY 2hrs NO RETURN WITHIN 1hr**
- **EXISTING WAITING AND PARKING RESTRICTIONS**

**Revoke 15m of existing DYLA & replace with parking bays 2hrs limit no return 1 hr Mon - Fri 0830 -17.00**

Notes

Rev.	Description	Drwn	Sig.	Date	Chkd	Sig.	Date	Appr	Sig.	Date
A	RESTRICTIONS ADDED	CAH	CAH	02.10	JP	JP	02.10	TPC	TPC	02.10

Drwn	Sig.	Date	Chkd	Sig.	Date	Appr	Sig.	Date
CAH	CAH	02.10	JP	JP	02.10	TPC	TPC	02.10

Scale 1:1250

Project

REIGATE AND BANSTEAD DPE  
REDHILL

IMPLEMENTED TRAFFIC ORDERS

Checked by  
CAH  
Date 02.10

Checked by  
JP  
Date 02.10

Approved by  
TPC  
Date 02.10

REIGATE AND BANSTEAD DPE  
REDHILL

IMPLEMENTED TRAFFIC ORDERS

SHEET OF

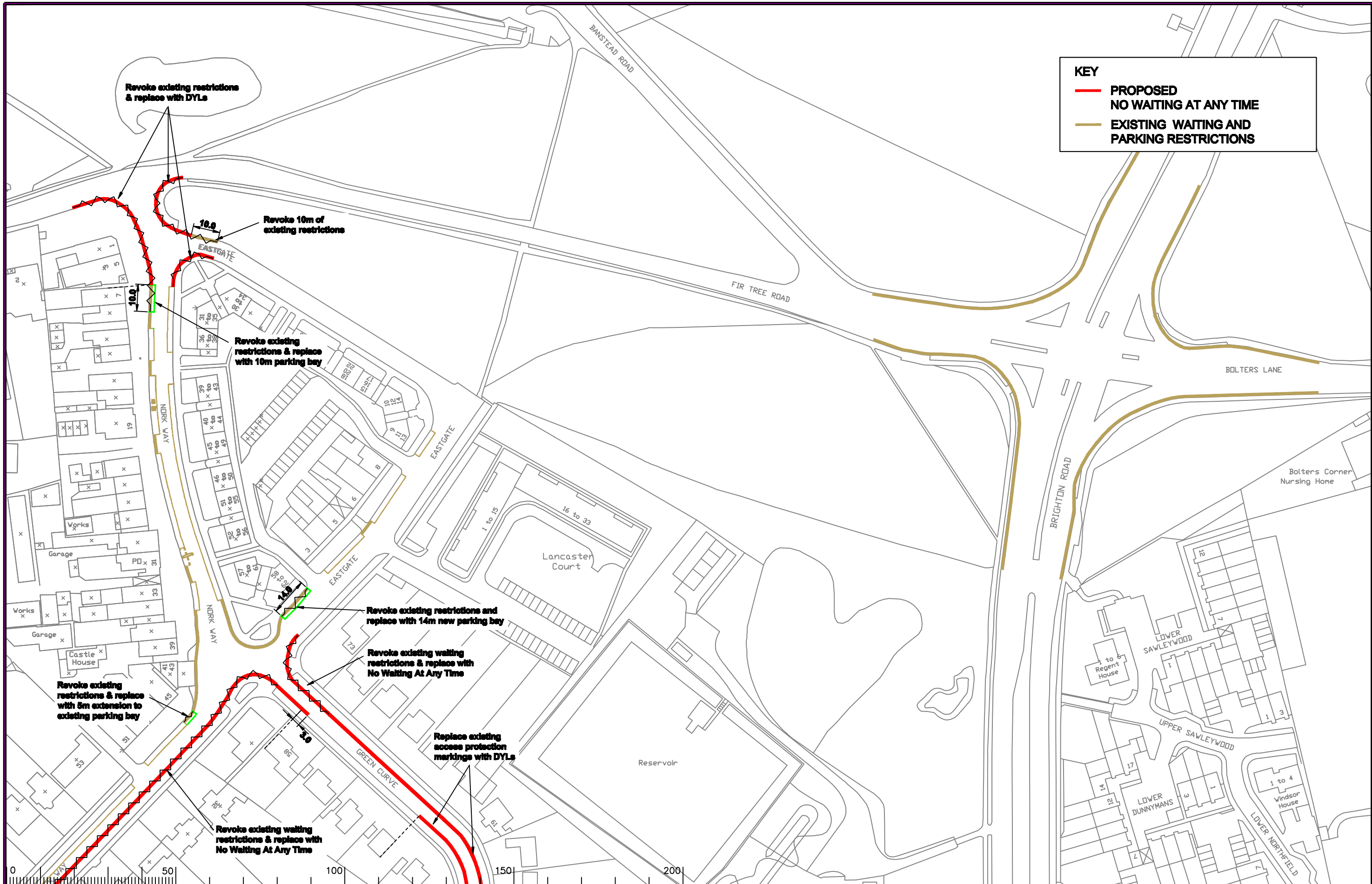
**SURREY COUNTY COUNCIL**  
Sustainable Development

Project No. 3282/R&B  
Contract Sheet No. 18073  
Drawing No. 18073  
Rev. A

PRESENTATION

**KEY**

- PROPOSED
- NO WAITING AT ANY TIME
- EXISTING WAITING AND PARKING RESTRICTIONS



Notes

Rev.	Description	Drwn	Sig.	Date	Chkd	Sig.	Date	Appr	Sig.	Date
A	RESTRICTIONS REVOKED AND ADDED	CAH	CAH	02.10	JP	JP	02.10	TPC	TPC	02.1

North Point

Based upon the Ordnance Survey mapping with the permission of the Controller of Her Majesty's Stationery Office. © Crown copyright. Unauthorised reproduction infringes Crown copyright and may lead to prosecution or civil proceedings. Surrey County Council LA 076872 1996.

Drawn by	CAH	Sig.	CAH	Date	02.10
Checked by	JP	Sig.	JP	Date	02.10
Approved by	TPC	Sig.	TPC	Date	02.10

Project

**REIGATE AND BANSTEAD DPE  
BANSTEAD  
IMPLEMENTED TRAFFIC ORDERS**

Drawing

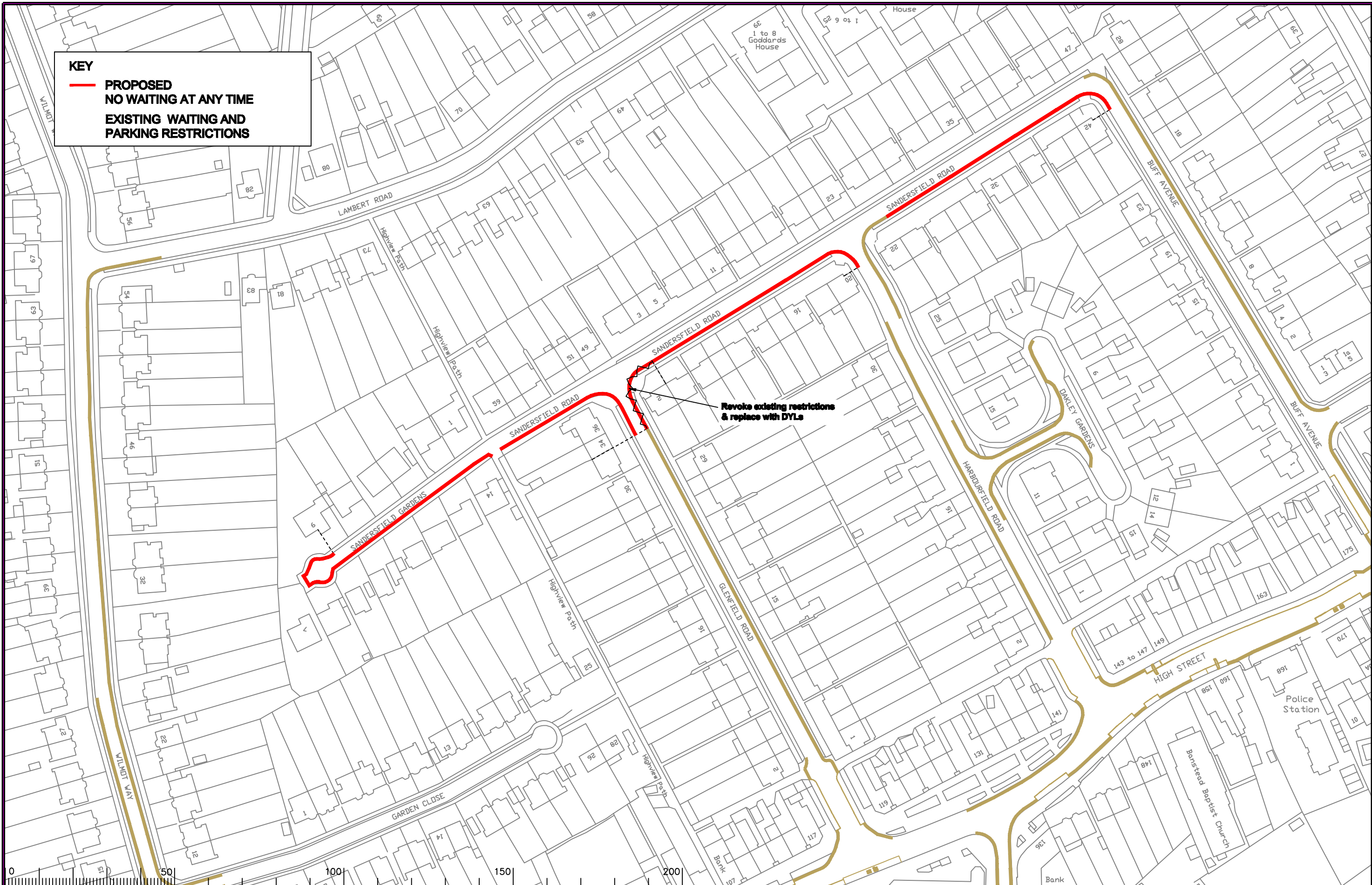
**SURREY COUNTY COUNCIL**  
Sustainable Development  
Head of Department  
S.A. Lee  
Medway Office City Gate West

Project No. 3282/R&B  
Contract Sheet No. 18004  
Drawing No. 18004  
Rev. A  
Classification PRESENTATION

SHEET OF

**KEY**

- PROPOSED NO WAITING AT ANY TIME
- EXISTING WAITING AND PARKING RESTRICTIONS



Notes

Rev.	Description	Drwn	Sig.	Date	Chkd	Sig.	Date	Appr	Sig.	Date
B	RESTRICTIONS ADDED	CAH	CAH	02.10	JP	JP	02.10	TPC	TPC	02.10

Drwn	Sig.	Date	Chkd	Sig.	Date	Appr	Sig.	Date
CAH	CAH	02.10	JP	JP	02.10	TPC	TPC	02.10

Scale 1:1250

North Point

Based upon the Ordnance Survey mapping with the permission of the Controller of Her Majesty's Stationery Office © Crown copyright. Unauthorised reproduction infringes Crown copyright and may lead to prosecution or civil proceedings. Surrey County Council LA 076872 1999.

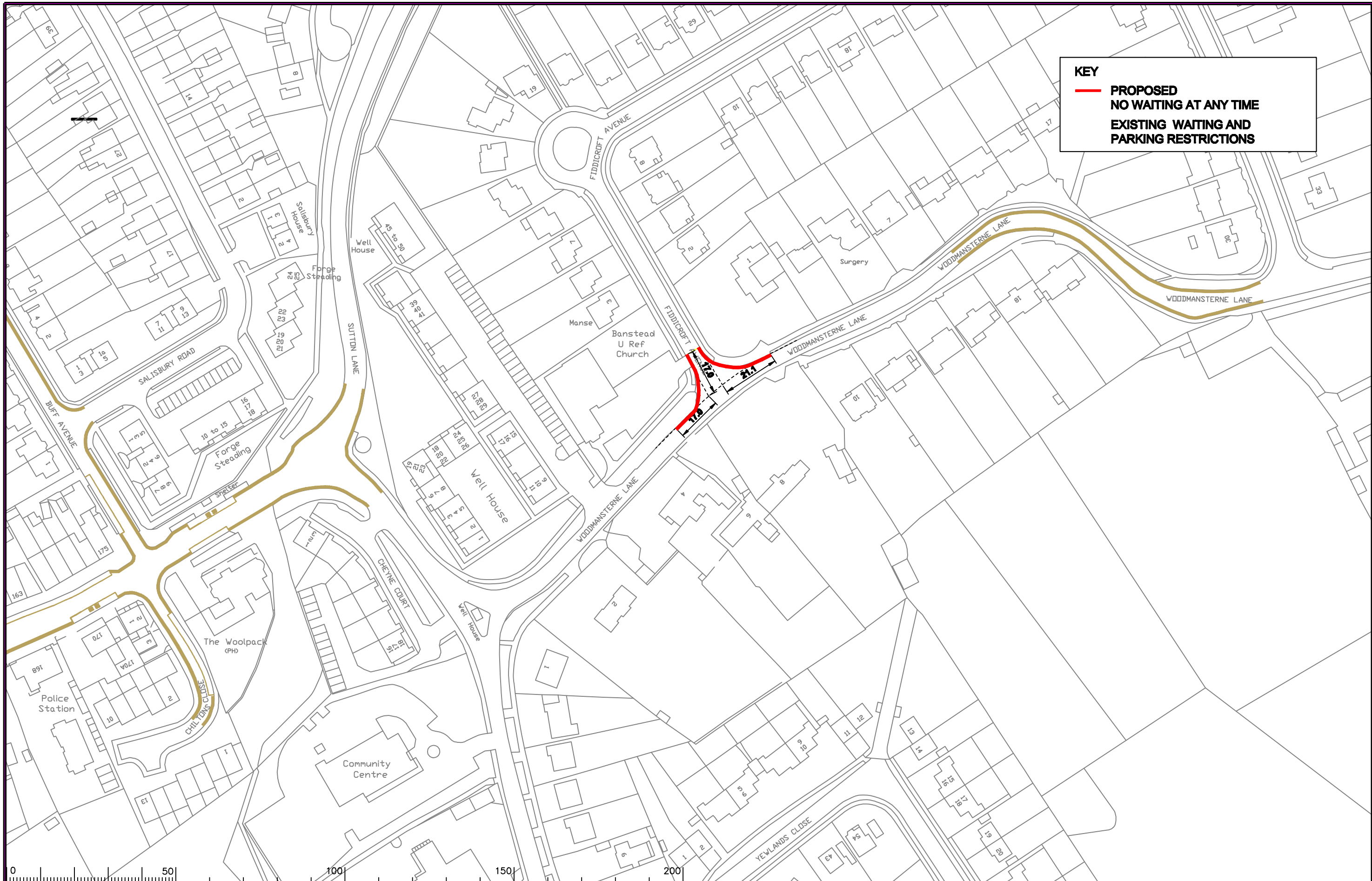
Drawn by	Sig.	Date
CAH	CAH	02.10
Checked by	Sig.	Date
JP	JP	02.10
Approved by	Sig.	Date
TPC	TPC	02.10

Project

**REIGATE AND BANSTEAD DPE  
BANSTEAD  
IMPLEMENTED TRAFFIC ORDERS**

SHEET OF

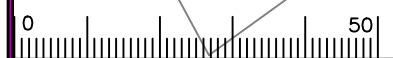
Project No. 3282/R&B  
Contract Sheet No. 18006  
Drawing No. A  
Classification PRESENTATION



**KEY**

**—** PROPOSED  
NO WAITING AT ANY TIME

**—** EXISTING WAITING AND  
PARKING RESTRICTIONS



Notes

Rev.	Description	Drwn	Sig.	Date	Chkd	Sig.	Date	Appr	Sig.	Date
A	RESTRICTIONS ADDED	CAH	CAH	02.10	JP	JP	02.10	TPC	TPC	02.10

Rev.	Description	Drwn	Sig.	Date	Chkd	Sig.	Date	Appr	Sig.	Date
A	RESTRICTIONS ADDED	CAH	CAH	02.10	JP	JP	02.10	TPC	TPC	02.10

North Point

Based upon the Ordnance Survey mapping with the permission of the Controller of Her Majesty's Stationery Office. Crown copyright. Unauthorised reproduction infringes Crown copyright and may lead to prosecution or civil proceedings. Surrey County Council LA 076872 1998.

Drawn by	CAH	Sig.	CAH	Date	02.10
Checked by	JP	Sig.	JP	Date	02.10
Approved by	TPC	Sig.	TPC	Date	02.10

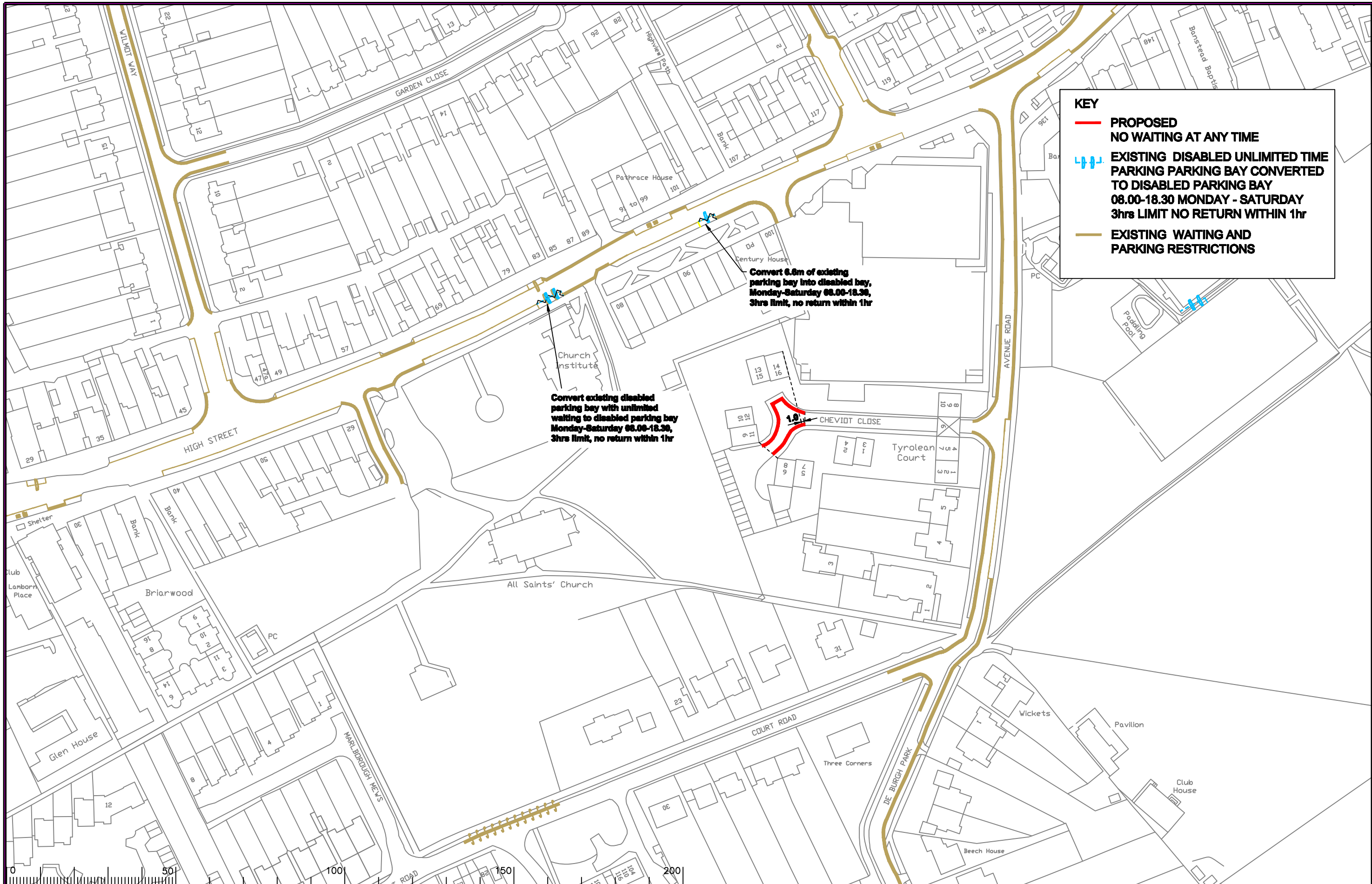
Project

**REIGATE AND BANSTEAD DPE  
BANSTEAD  
IMPLEMENTED TRAFFIC ORDERS**

SHEET OF

**SURREY**  
COUNTY COUNCIL  
Sustainable Development

Project No. 3282/R&B  
Contract Sheet No. 18007  
Drawing No. 18007  
Rev. A  
Classification PRESENTATION



**KEY**

- **PROPOSED NO WAITING AT ANY TIME**
- ▨ **EXISTING DISABLED UNLIMITED TIME PARKING BAY CONVERTED TO DISABLED PARKING BAY 08.00-18.30 MONDAY - SATURDAY 3hrs LIMIT NO RETURN WITHIN 1hr**
- **EXISTING WAITING AND PARKING RESTRICTIONS**

Convert 6.6m of existing parking bay into disabled bay, Monday-Saturday 08.00-18.30, 3hrs limit, no return within 1hr

Convert existing disabled parking bay with unlimited waiting to disabled parking bay Monday-Saturday 08.00-18.30, 3hrs limit, no return within 1hr

Notes

Rev.	Description	Drwn	Sig.	Date	Chkd	Sig.	Date	Appr	Sig.	Date
A	RESTRICTIONS AND DISABLED BAYS ADDED	CAH	CAH	02.10	JP	JP	02.10	TPC	TPC	02.10

Drwn	Sig.	Date	Chkd	Sig.	Date	Appr	Sig.	Date
CAH	CAH	02.10	JP	JP	02.10	TPC	TPC	02.10

North Point

Based upon the Ordnance Survey mapping with the permission of the Controller of Her Majesty's Stationery Office © Crown copyright. Unauthorised reproduction infringes Crown copyright and may lead to prosecution or civil proceedings. Surrey County Council LA 076872 1996.

Drwn by	Sig.	Date
CAH	CAH	02.10
Checked by	Sig.	Date
JP	JP	02.10
Approved by	Sig.	Date
TPC	TPC	02.10

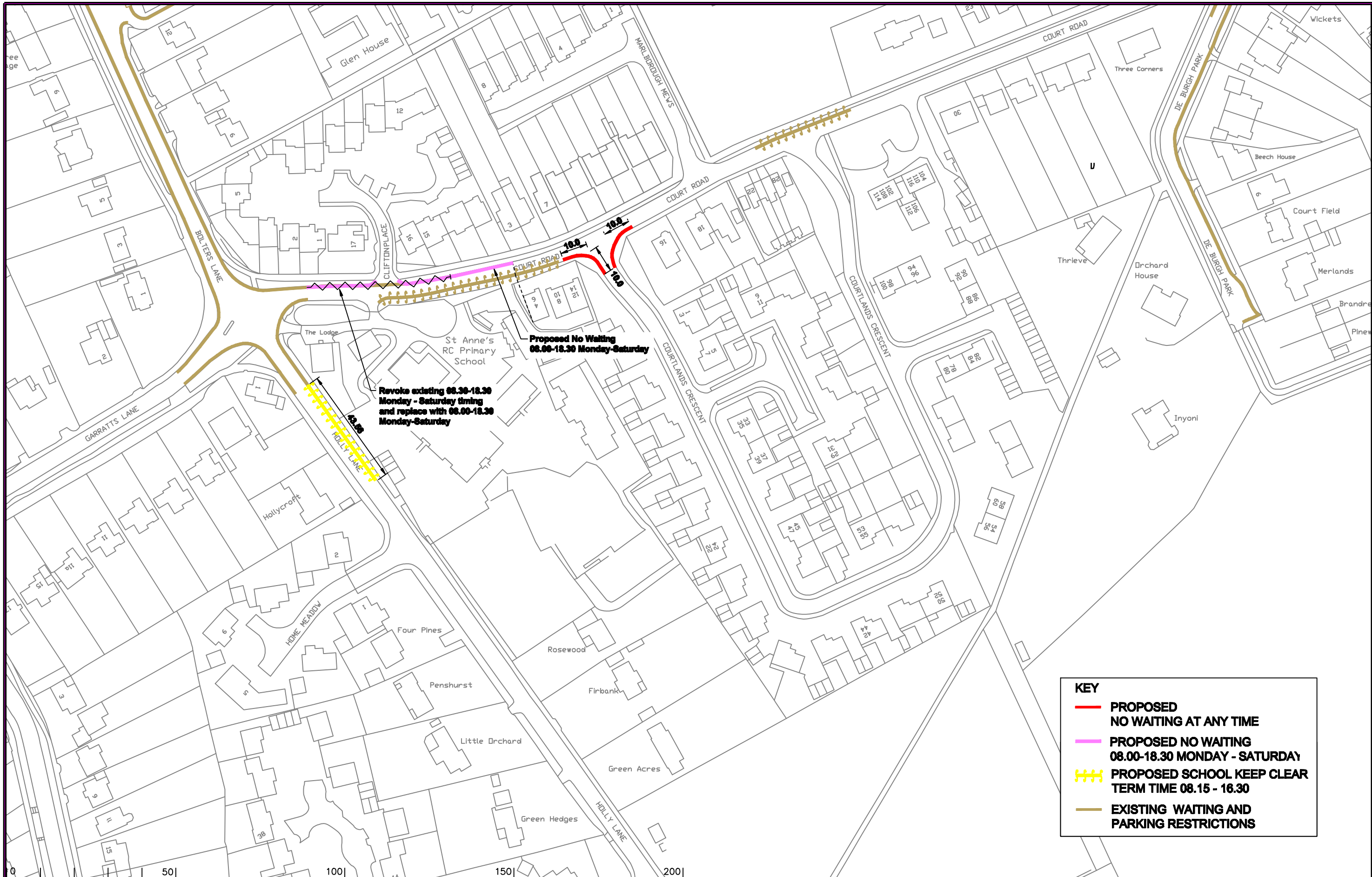
S:\Project-current\3282\R&B\Cad Drawings\20 Presentation\18009\_A.dwg Scale 1:1250

Project	Drawing
REIGATE AND BANSTEAD DPE BANSTEAD	IMPLEMENTED TRAFFIC ORDERS

SHEET OF

**SURREY COUNTY COUNCIL**  
Sustainable Development

Project No. 3282/R&B  
Contract Sheet No. 18009  
Drawing No. A  
Classification PRESENTATION



**KEY**

- **PROPOSED NO WAITING AT ANY TIME**
- **PROPOSED NO WAITING 08.00-18.30 MONDAY - SATURDAY**
- **PROPOSED SCHOOL KEEP CLEAR TERM TIME 08.15 - 16.30**
- **EXISTING WAITING AND PARKING RESTRICTIONS**

Notes

Rev.	Description	Drwn	Sig.	Date	Chkd	Sig.	Date	Appr	Sig.	Date
A	RESTRICTIONS REVOKED AND ADDED	CAH	CAH	02.10	JP	JP	02.10	TPC	TPC	02.10

Drwn	Sig.	Date	Chkd	Sig.	Date	Appr	Sig.	Date
CAH	CAH	02.10	JP	JP	02.10	TPC	TPC	02.10

North Point

Based upon the Ordnance Survey mapping with the permission of the Controller of Her Majesty's Stationery Office © Crown copyright. Unauthorised reproduction infringes Crown copyright and may lead to prosecution or civil proceedings. Surrey County Council LA 076872 1996.

Drwn by	Sig.	Date
CAH	CAH	02.10
Checked by originator	JP	02.10
Approved by	TPC	02.10

S:\Project-current\3282\R&B\Cad Drawings\20 Presentation\18010 A.dwg Scale 1:1250

Project

REIGATE AND BANSTEAD DPE  
BANSTEAD

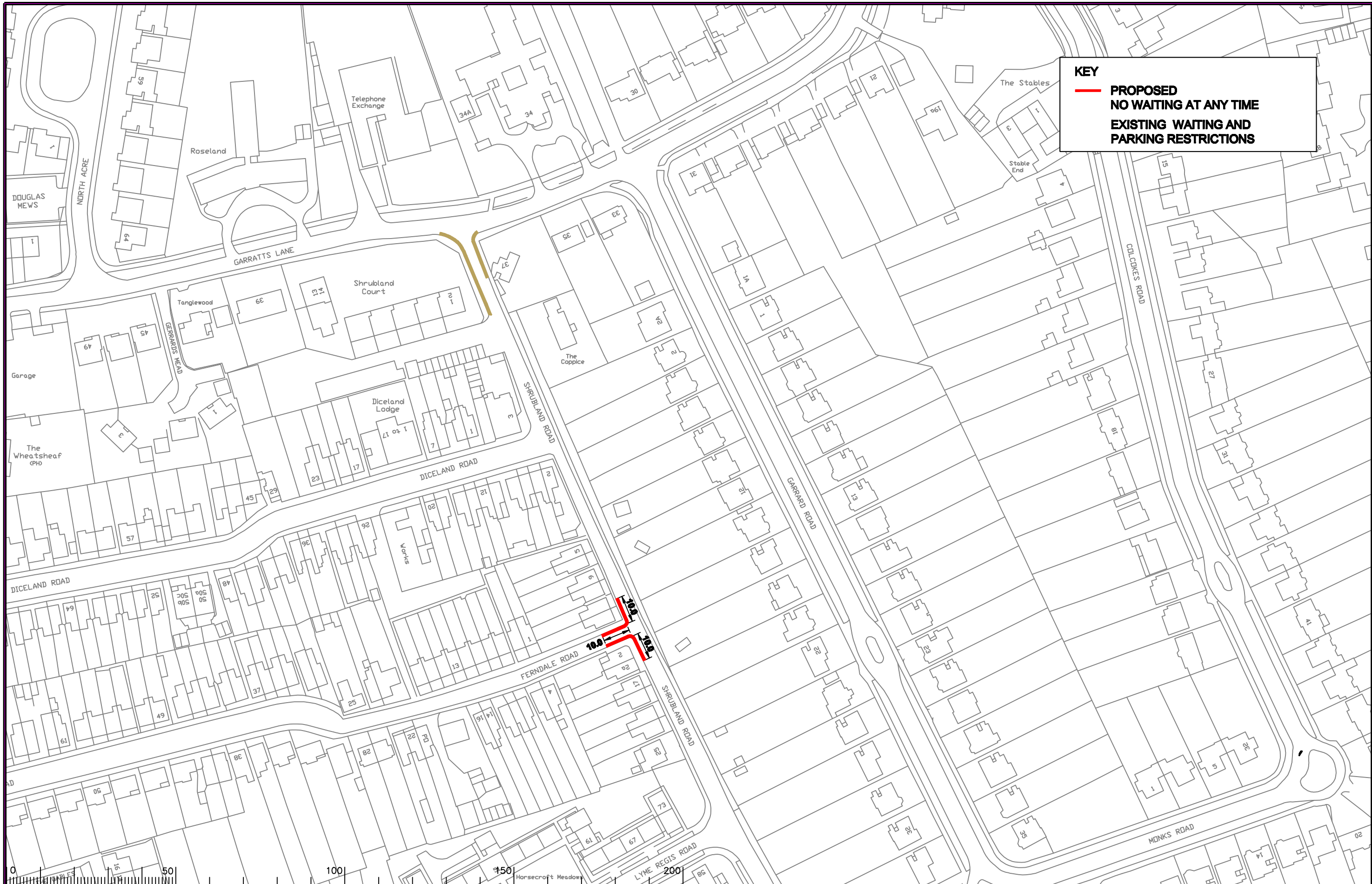
Drawing

IMPLEMENTED TRAFFIC ORDERS

SHEET OF

**SURREY**  
COUNTY COUNCIL  
Sustainable Development

Project No. 3282/R&B  
Contract Sheet No. 18010  
Drawing No. A  
Classification PRESENTATION



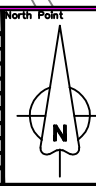
**KEY**

— **PROPOSED  
NO WAITING AT ANY TIME**

— **EXISTING WAITING AND  
PARKING RESTRICTIONS**

Notes

Rev.	Description	Drwn	Sig.	Date	Chkd	Sig.	Date	Appr	Sig.	Date
A	RESTRICTIONS ADDED	CAH	CAH	02.10	JP	JP	02.10	TPC	TPC	02.10



Based upon the Ordnance Survey mapping with the permission of the Controller of Her Majesty's Stationery Office © Crown copyright. Unauthorised reproduction infringes Crown copyright and may lead to prosecution or civil proceedings. Surrey County Council LA 076872 1998.

Drawn by CAH Sig. CAH Date 02.10  
 Checked by JP Sig. JP Date 02.10  
 Approved by TPC Sig. TPC Date 02.10

Project

**REIGATE AND BANSTEAD DPE  
BANSTEAD**

Drawing

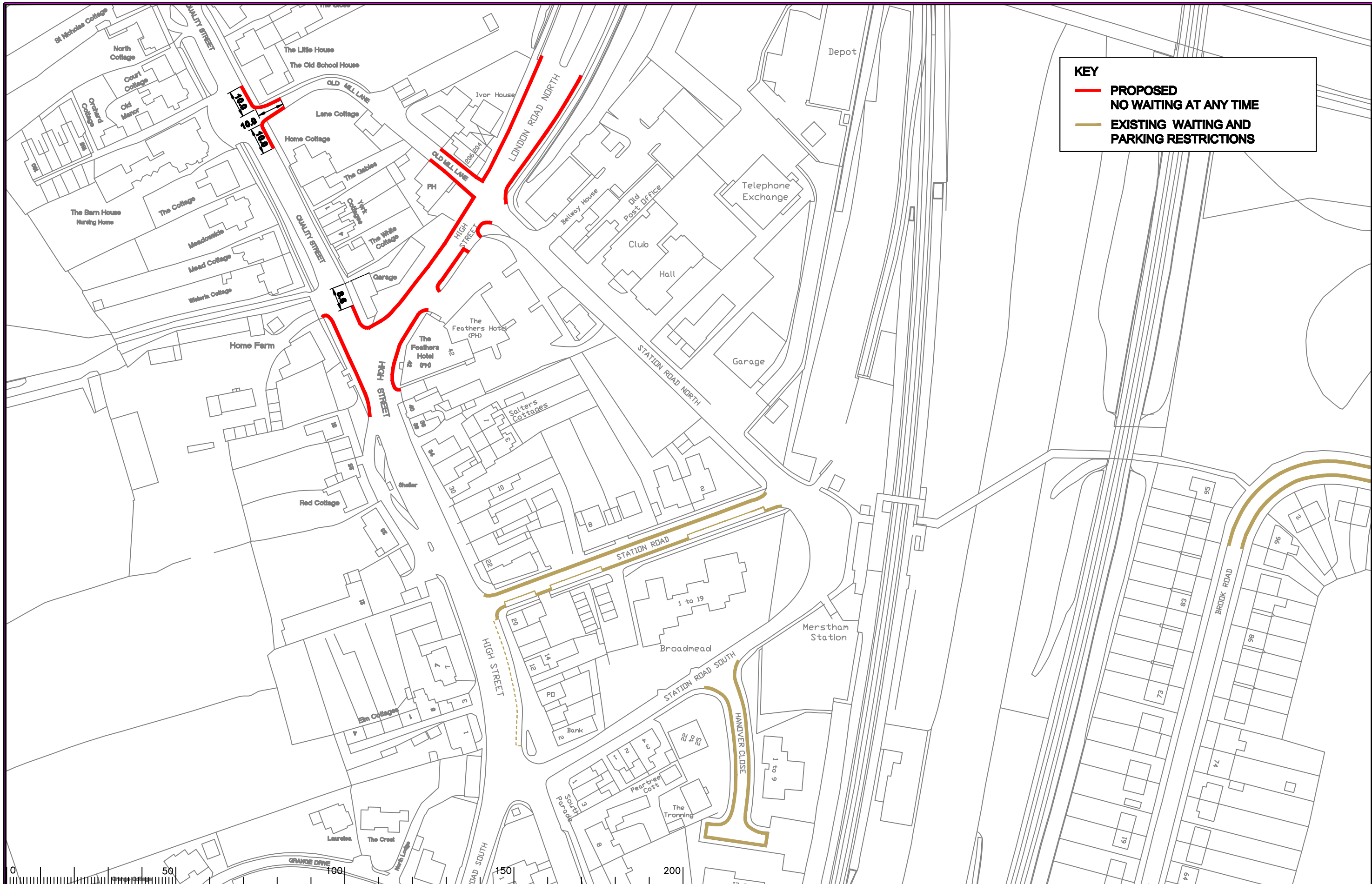
**IMPLEMENTED TRAFFIC ORDERS**

SHEET OF

**SURREY  
COUNTY COUNCIL**  
Sustainable Development

Project No. 3282/R&B  
 Contract Sheet No. 18011  
 Drawing No. 18011  
 Rev. A  
 Classification PRESENTATION





**KEY**

- PROPOSED NO WAITING AT ANY TIME
- EXISTING WAITING AND PARKING RESTRICTIONS

Notes

Rev.	Description	Drwn	Sig.	Date	Chkd	Sig.	Date	Appr	Sig.	Date
A	RESTRICTIONS ADDED	CAH	CAH	02.10	JP	JP	02.10	TPC	TPC	02.10

Rev.	Description	Drwn	Sig.	Date	Chkd	Sig.	Date	Appr	Sig.	Date
A	RESTRICTIONS ADDED	CAH	CAH	02.10	JP	JP	02.10	TPC	TPC	02.10

North Point

Based upon the Ordnance Survey mapping with the permission of the Controller of Her Majesty's Stationery Office. Crown copyright. Unauthorised reproduction infringes Crown copyright and may lead to prosecution or civil proceedings. Surrey County Council LA 076872 1996.

Drawn by	CAH	Sig.	CAH	Date	02.10
Checked by	JP	Sig.	JP	Date	02.10
Approved by	TPC	Sig.	TPC	Date	02.10

Project

**REIGATE AND BANSTEAD DPE  
REDHILL**

Drawing

**IMPLEMENTED TRAFFIC ORDERS**

SHEET OF

**SURREY**  
COUNTY COUNCIL  
Sustainable Development

Project No. 3282/R&B  
Contract Sheet No. 18046  
Drawing No. 18046  
Rev. A  
Classification PRESENTATION